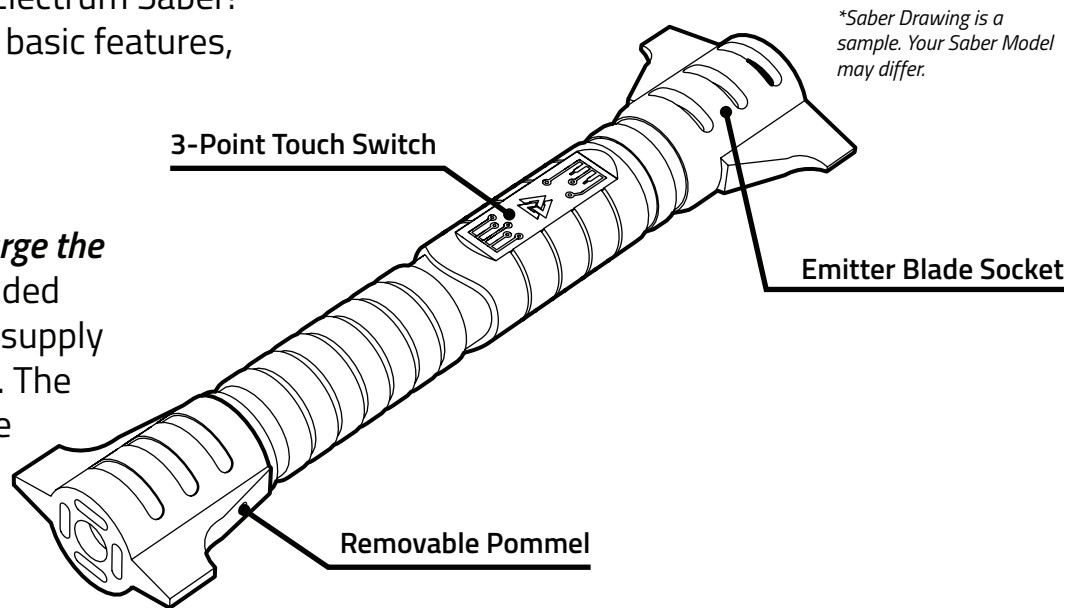


Congratulations on your new Electrum Saber! Each of our sabers have these basic features, depending on saber model.

Charging Your Saber

It is recommended that you charge the saber before use with the provided micro USB cable. Use a power supply rated at 2A for optimal charge. The saber takes ~6 hours to charge from 0%.

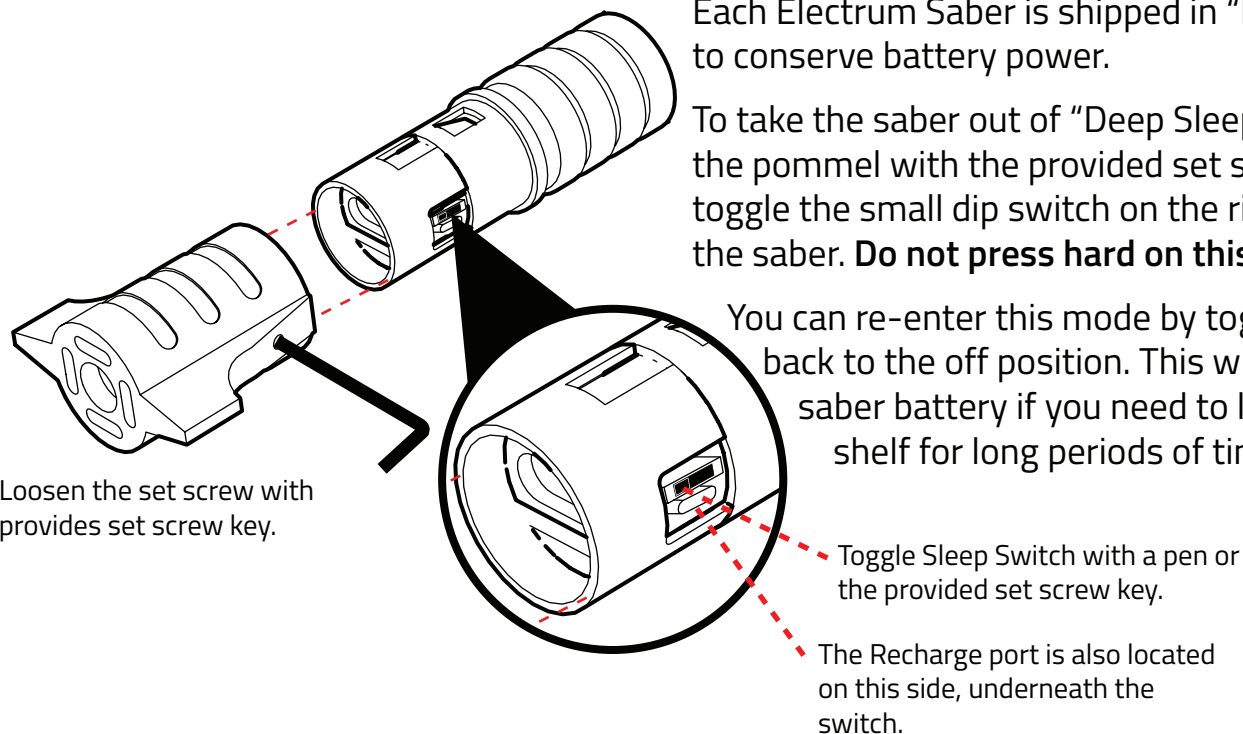


First Time Activation

Each Electrum Saber is shipped in "Deep Sleep" mode to conserve battery power.

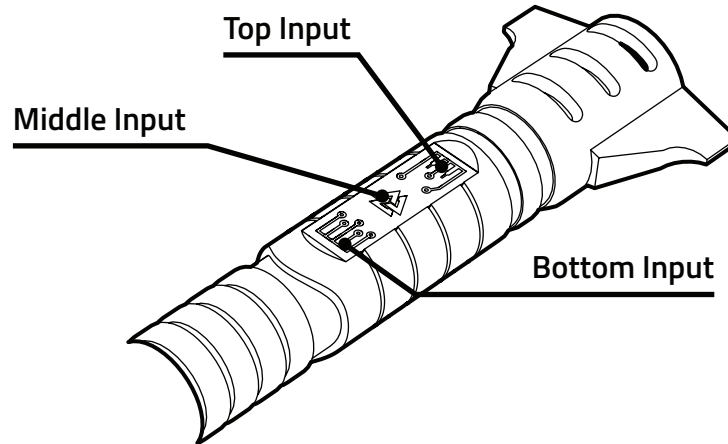
To take the saber out of "Deep Sleep" mode, remove the pommel with the provided set screw key, and toggle the small dip switch on the right side toward the saber. **Do not press hard on this switch.**

You can re-enter this mode by toggling the switch back to the off position. This will preserve the saber battery if you need to leave it on the shelf for long periods of time.



Resetting the Saber

If the saber requires a reset (e.x. Soundfonts didnt load properly, switch sensitivity needs resetting), toggle this Sleep Switch, and the saber will reload. If you require a factory reset, refer to Troubleshooting on page 3.



Switch Operation

Each Electrum Saber 3-point Touch Switch has 3 points of activation: the **Top**, **Middle**, and **Bottom** inputs. These each have a special feature associated with them.

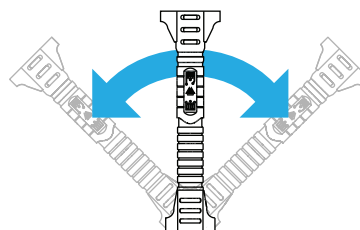
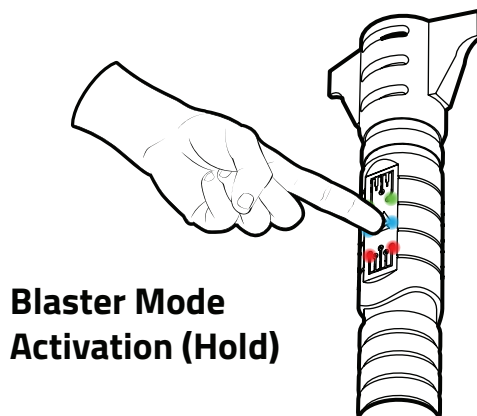
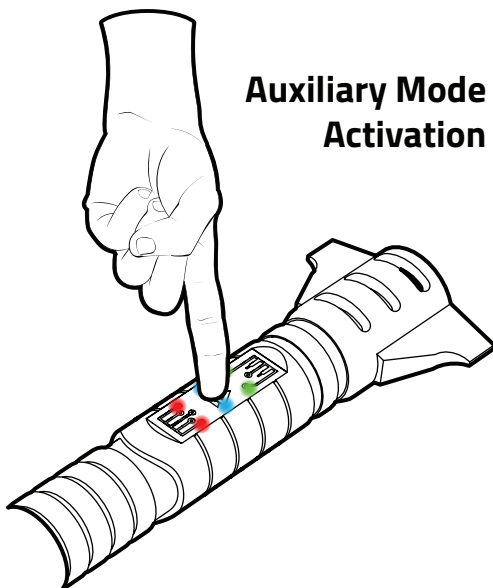
To activate the saber, **slide your finger from the *Bottom* to the *Middle***. To deactivate the saber, **slide from *Top* to *Middle***.

Auxiliary Mode

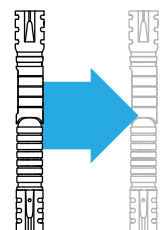
Sound & Color selection, Blaster Mode, Force Effects.

The Auxiliary mode menu allows you to change your Sound Bank and Blade Profile directly on the saber. This menu is accessed by **holding the Middle Input on the switch while the saber is in a level *horizontal* position until all switch LEDs come on, then release**. To toggle your blade color once in this mode, press the **Top input**. To toggle Sound Banks, press the **Bottom Input**. Once you are satisfied with your selection, press the **Middle Input** to exit.

To enter Blaster mode, the process is similar. Hold the saber in a **Vertical position before entering the mode**, instead of horizontal. Additionally, you must **continue to hold the Middle Input**. Once the mode is active, swing the saber to create blaster effects. To toggle a "Force Effect", push the saber in a straight line outward.

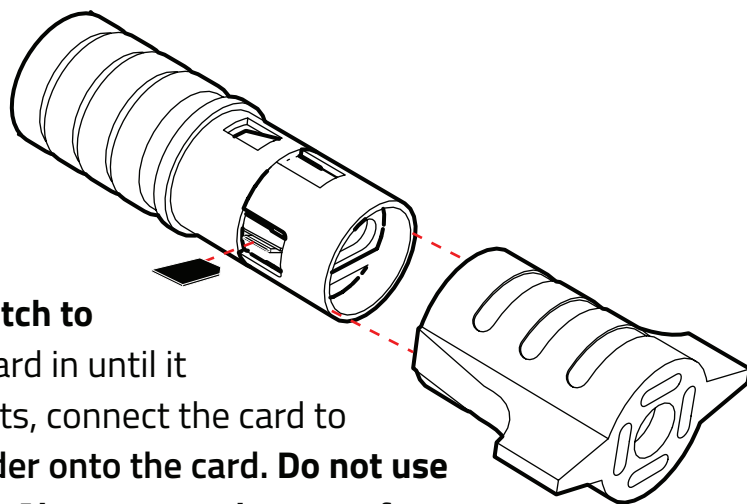


Blaster Effect Motion



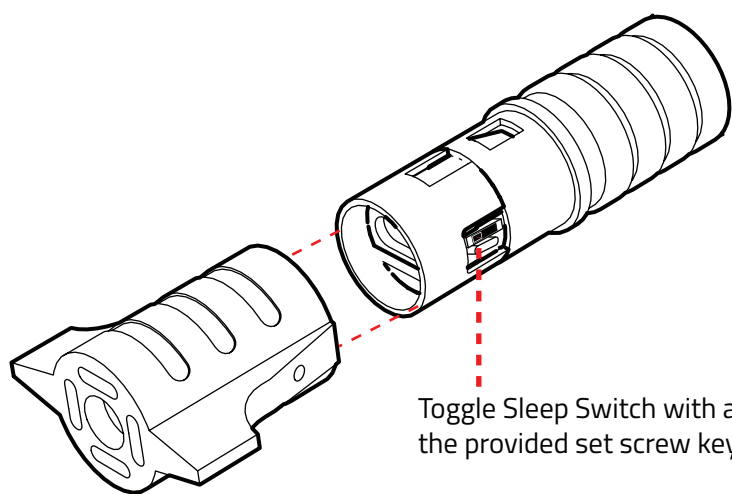
Force Effect Motion

All Sound Banks on your Electrum Saber are stored on the included SD card. This can be accessed by removing the pommel. **Before performing any Sound Bank changes, it is recommended that you first turn you Sleep Switch to the off position (refer to page 1).** Push the SD card in until it clicks, and then pull to remove. To add sound fonts, connect the card to a computer, and **drag your entire sound font folder onto the card. Do not use special characters or spaces in the folder name. Also, ensure that your fonts are not stored in a sub-folder inside the main folder.** Once all your folders are loaded, reinsert the card by clicking it into place, and then toggle the Sleep Switch back on. Your fonts should now be selectable. If your font isnt appearing on the saber, refer to the Troubleshooting Section.

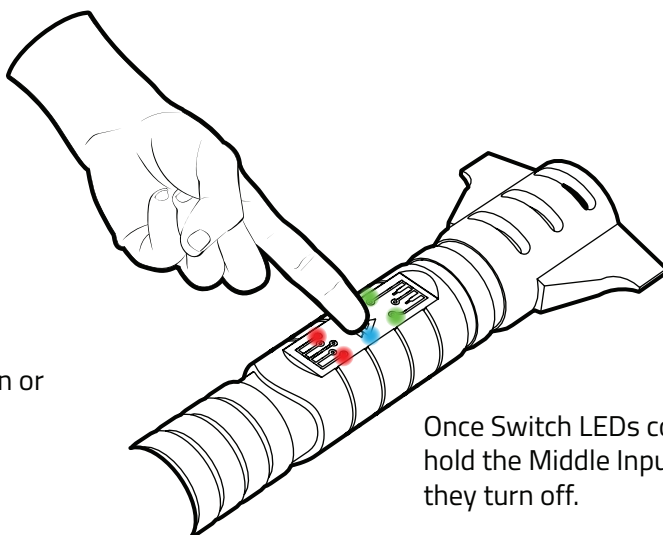


Troubleshooting

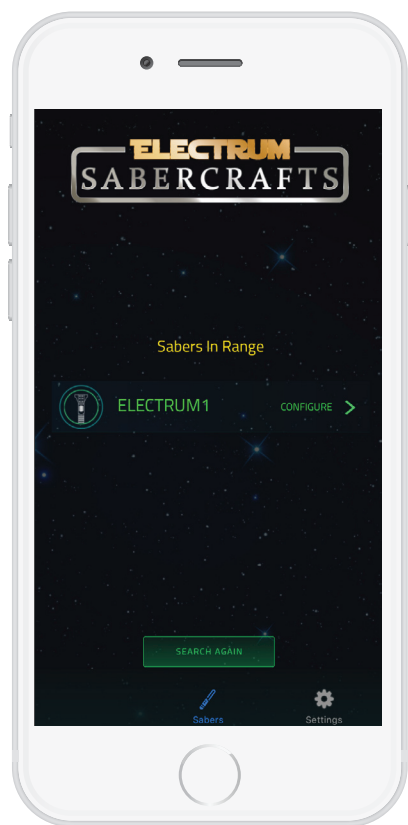
If the Saber is not performing accurately, the Saber has a Hard Reset function which will restore the Saber to factory settings, and reload all sound banks. **All custom settings, including custom sound banks, motions, colors, and profiles will be erased when performing this process.** To Hard Reset the Saber, toggle the Sleep Switch (refer to page 1). Once all the LEDs on the Switch light up and are steady, hold the Middle Input until the LEDs start blinking, then release. The saber will boot into color bank 1 and default to the first sound font on your SD card.



Toggle Sleep Switch with a pen or the provided set screw key.



Once Switch LEDs come on, hold the Middle Input until they turn off.

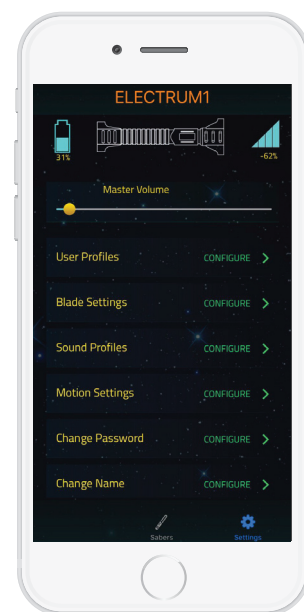


Connecting to the Electrum Unity App

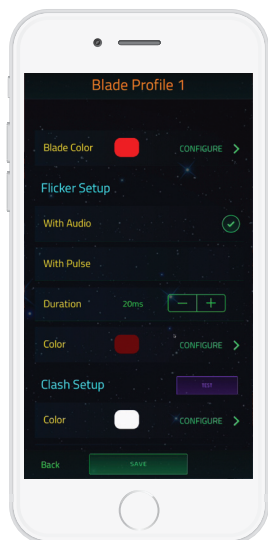
The Electrum Unity app is available on Google Play for Android™ devices and the App Store for Apple® devices. To connect to the saber with the app, activate the saber (blade on) and open the app. When connecting to the saber for the first time, it will appear as either "ELECTRUM1" or with a blank name. Tap to select the Saber.

Upon connection, the saber will make a connection confirmation noise. After this, the main menu will be displayed, allowing for fine tuning of all of the Sabers settings.

App video overviews are available at ElectrumSabers.com

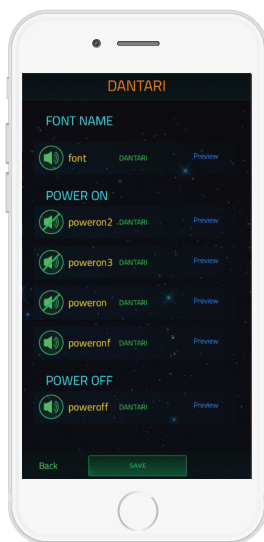


Electrum Unity App Main Menus



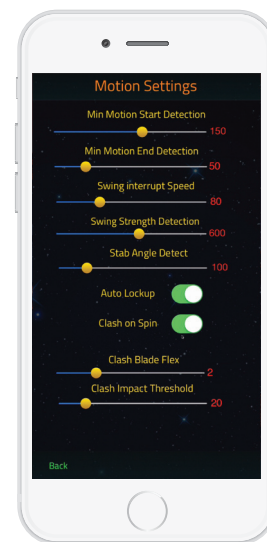
Blade Color Settings

Adjust main color, pulse color, clash color, clash duration from this page. Swipe left or right on the page to switch to another color profile.



Sound Bank Settings

Configure each sound bank, mute specific sounds, and create new mix & match sound banks. Use the Reload from SD option to add any new sound banks.



Motion Settings

Completely configure motions on the fly using the motion configuration menu. This also allows you to toggle "Auto Lockup" off, defaulting it to the top switch.

F.A.Qs

Q: What types of sounds does the saber support?

A: The Saber supports 16 bit WAV files. The Saber does now "Interlace" sound effects, so sounds that are designed with the hum effect built into the effects (e.x. Plecter optimized) are best.

Q: How many Sound Banks can the saber have?

A: The saber can support any combination of SD card sound banks and Custom created banks via the app, to a maximum of 8.

Q: How many color banks does the saber have?

A: You can set up to 12 color banks.

Q: My new SD card sound bank doesn't load on the saber. What do I do?

A: Ensure that the folder name has no special characters or spaces. Ensure that your sound files are not in a sub-folder inside the main font folder. Toggle the Sleep Switch to reset the saber. If your Sound bank still does not appear, perform a Hard Reset.

Q: I don't remember my app password for my saber. What can I do?

A: The default password is 1234. If this does not work, perform a Hard Reset. This will reset your password.

Q: How do I know when my saber is charged?

A: The saber takes 6 hours to charge from 0 to 100%. Note that the battery indicator on the app takes the approximate battery life of the saber at the time of connection, so it is possible that the battery level will show slightly lower than the actual battery level.

For additional information on your Electrum Saber, and for the Electrum Unity App overview, visit
www.ElectrumSabers.com